

# Rack Mount Patch Panel ODU-L11

## Overview

ODF (Optical Distribution Frame) rack mount patch panel ODU-L11 is designed for a high-density fiber management system, adaptable with standard 19", 21" and 23" frame and currently being widely used in high density optical fiber distribution frames, which can be deployed in data center, central office, FTTH, FTTB, etc. The rack mount panel is made of top quality metal material and could contain up to 12 high density integrated splice & distribution units (up to 432 LC or 288 SC). Splice and distribution are integrated in one module. A 1U panel will hold 3 modules, a 2U panel will hold 6 modules and a 4U panel will hold 12 modules. Each module can complete the splice and distribution processes of 24 SC or 36 LC.



## Features

- Top quality steel with electrostatic painted ensures the strong body and pleasing appearance.
- Easy installation: 19", 21" and 23" rack mounting.
- For standard 19", 21" and 23" racks use
- Front rack mount brackets work with most network cabinets.
- Easy operations: using sliding rails to install the high density modules.
- Easy removable of modules
- Multi-functions – Works with Series modules H1 (not just for splicing & terminating, also with options for splitters or fiber storage).
- Protected patch panel offers secure environment for adapters, patch cords and pigtails.
- Adoptable adapter types: SC, LC.

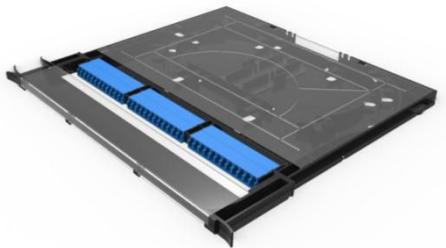
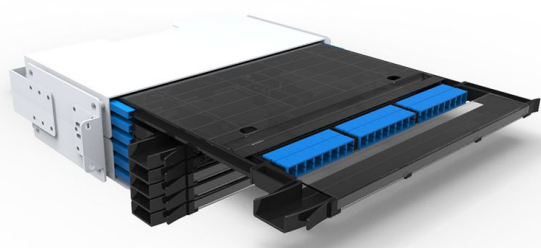
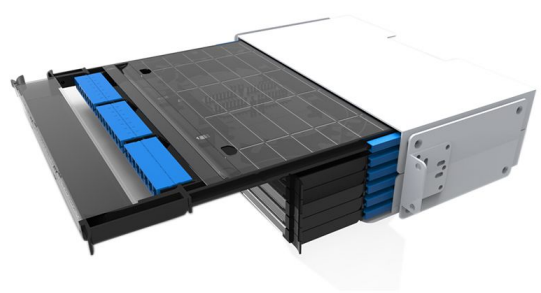


Dimensions and Capability					
Height	Depth(mm)	Width	Module H1 Capacity		Module Quantity
			SC	LC	
1U (without cover)	280	19"/21"/23"	72	108	3
2U	280	19"/21"/23"	144	216	6
3U	280	19"/21"/23"	216	324	9
4U	280	19"/21"/23"	288	432	12

\* Height is upon request.

Shipping Information	
Package Contents	Patch panel, 1 unit
Package Dimensions(W*H*D)	It depends on the dimensions of the product
Material	Carton box
Weight	It depends on the dimensions of the product
Lead Time	10-15 working days normally

### Part Details



# Catalog Number

ODU-L11

Material
M = Metal
S = Stainless steel
O = Other*

Capacity
Enter the capacity required

ODU Color
W = White
B = Black
G = Grey
O = Other*

Height
1 = 1U
2 = 2U
3 = 3U
4 = 4U
O = Other*

Connector Type
SU = SC UPC
SA = SC APC
FU = FC UPC
FA = FC APC
LU = LC UPC (duplex)
LA = LC APC (duplex)
OO = Other*

Adapter Quantity
Enter the quantity required
N = No requirement

Fusion Tube
Y = Yes
N = No

Cable Color
Y = Yellow
B = Blue
W = White
O = Orange
G = Green
Z = Brown
S = Slate
R = Red
H = Black
P = Purple
F = Rose
A = Aqua
C = Color coded
N = No requirement

Pigtail Quantity
Enter the quantity required
N = No requirement

Fiber Type	
S = G652D	Single Mode
D = G655	
K = G656	
P = G657A1	
L = G657A2	
B = OM1 (62.5/125µm)	Multi Mode
G = OM1 (50/125µm)	
Q = OM2 (50/125µm)	
W = Om3	
Y = Om4	
O = Other*	
N = No requirement	

### Ordering Example:

ODU-L11M4W2SU4S4YN      Metal, Four cores, White ODU, 2U, SC UPC, 4 Adapters,G652D, 4 Pigtails, Yellow cable, No fusion tube

**Note:** \*If the required type of any item is not on the relevant list, please use "O" or "OO" as the red cells indicate, and kindly state the required type in the description of PO.